

Nos abeilles sauvages printanières

et quelques plantes associées

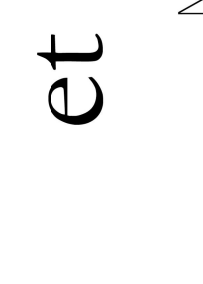
Nicolas J. Vereecken ~ meetyourneighbours.net



Osmia cornuta ♂



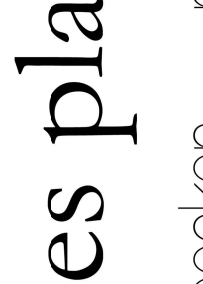
Osmia cornuta ♀



Andrena bicolor ♀



Andrena apicata ♀



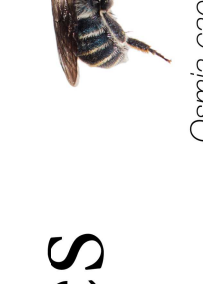
Bombus terrestris ♀



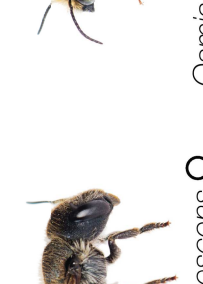
Andrena nitida ♀



Nomada lathburiana ♀



Osmia caerulescens ♀



Osmia caerulescens ♂



Ranunculus repens



Trifolium pratense



Siskia caprea



Andrena fulva ♀



Andrena bicolor ♀



Andrena apicata ♀



Bombus terrestris ♀



Andrena nitida ♀



Nomada lathburiana ♀



Andrena vaga ♀



Sphexcodes albibris ♀



Bombus lapidarius ♀



Osmia bicornis ♀



Osmia bicornis ♂



Bombus pratorum ♀



Andrena gravida ♀



Colletes curicularius ♀



Anthophora plumipes ♀



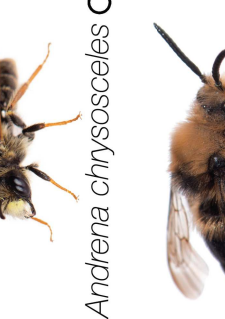
Anthophora plumipes ♂



Bombus hypnorum ♀



Andrena cineraria ♀



Andrena chrysoceles ♂



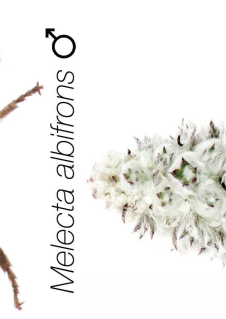
Andrena flavipes ♀



Andrena clarkella ♀



Andrena haemorrhoa ♀



Melecta albifrons ♂



Nomada goodeniana ♀



Borago officinalis



Campanula persicifolia



Primula veris



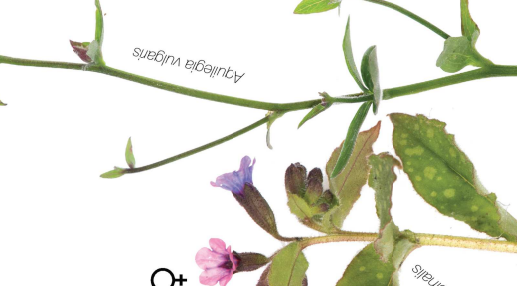
Helicorus foetidus



Stachys byzantina



Lasioglossum calceatum ♀



Aquilegia vulgaris



Inoc le soutien de :